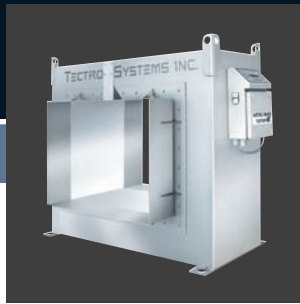
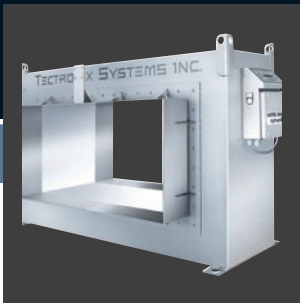


WHOLE LOG METAL DETECTOR

Exclusive ROUND APERTURE

- Delivers balanced all round signal for optimum sensitivity
- Important with a variable diet of log diameters



Optional **Rectangular** | **Square** Aperture

- Shortest **Metal Free Zone (MFZ)** in the industry
- **Stainless Steel** housings provide **Total Shielding** against transient influences that cause *false/nuisance* tripping
- The most technologically advanced metal detector available ... exclusive 4 channel **DDS** and **DSP microprocessor** provides continuous accuracy and stability
- System 'learns' the product and automatically compensates and adjusts for such things as different species, moisture, VFDS and pitch ensuring **95% less false/nuisance** tripping
- Up to 6000 fpm scanning speed with 100% accuracy
- Dye mark and/or electronically signature **exact** location of metal

